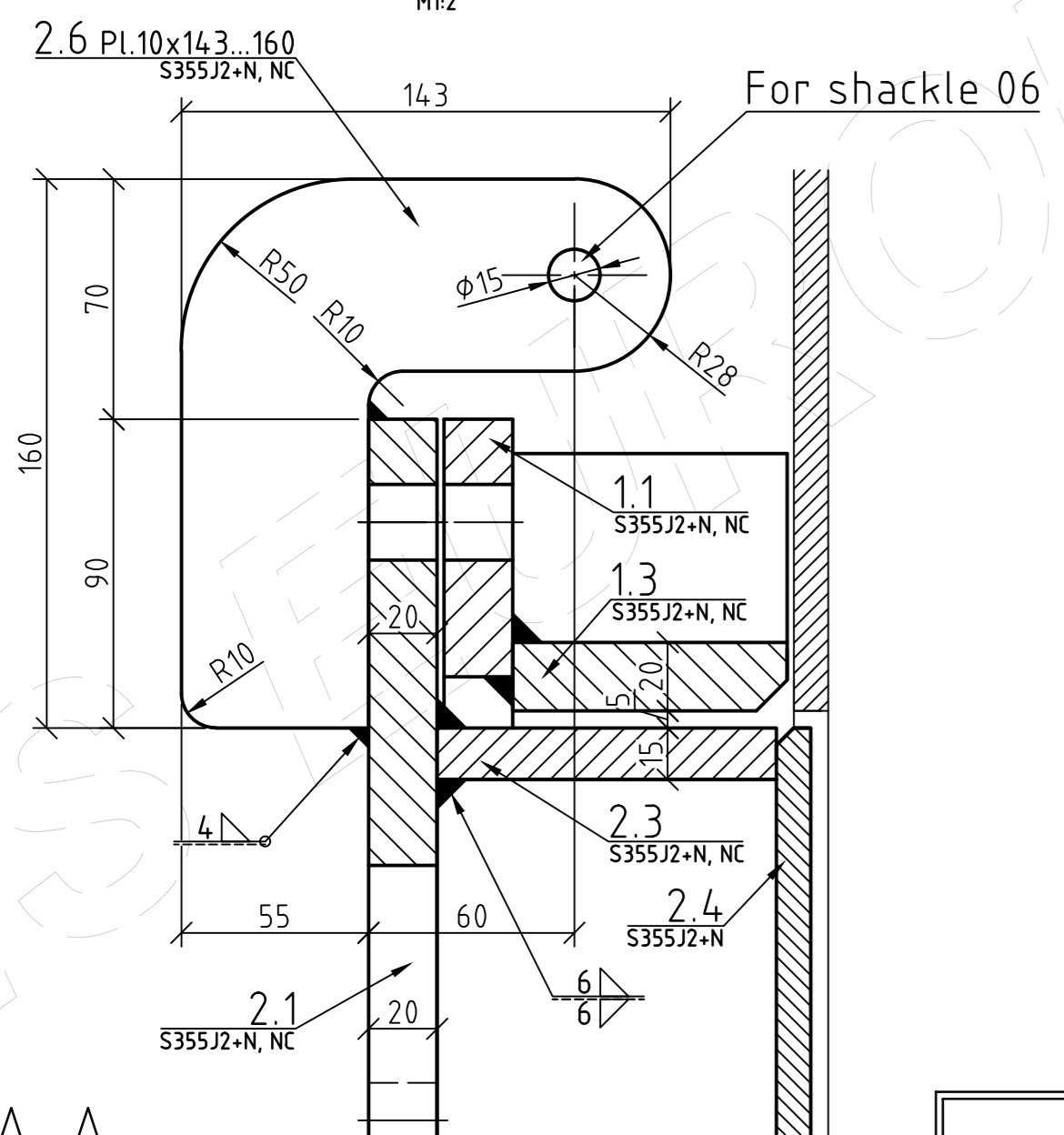


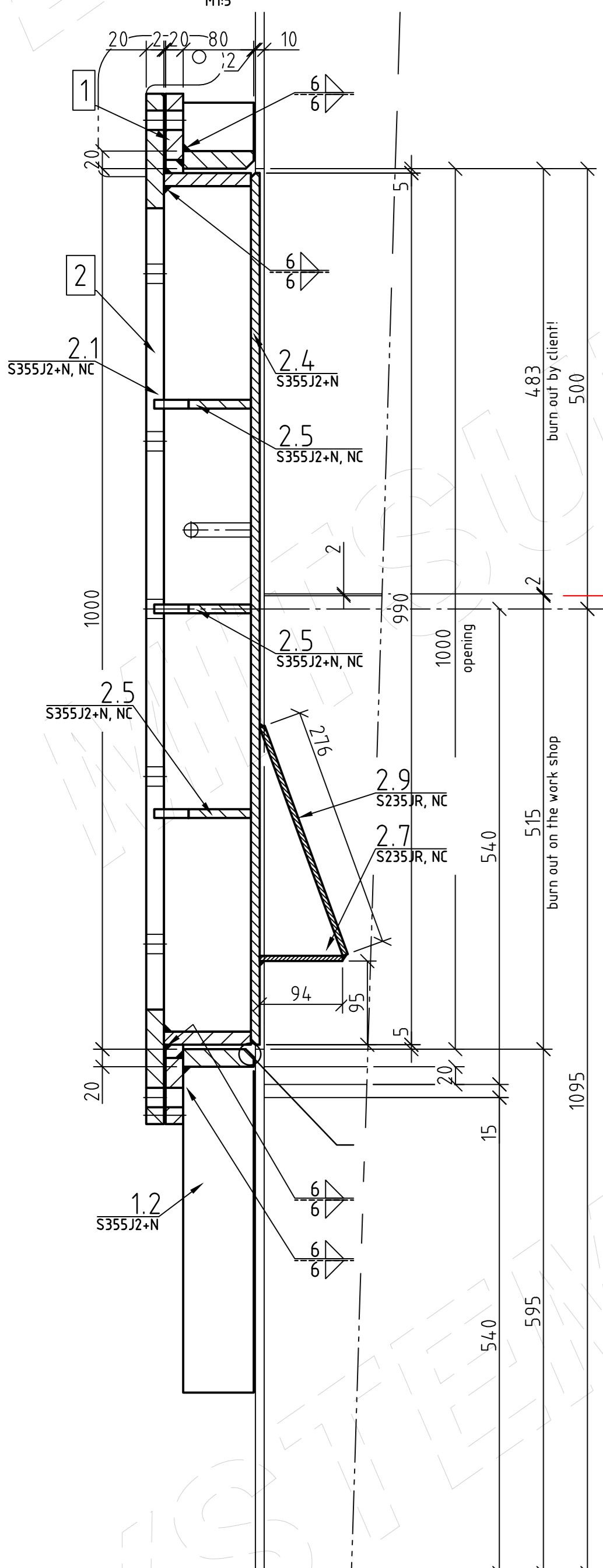
Lifting eye



90° / 270°

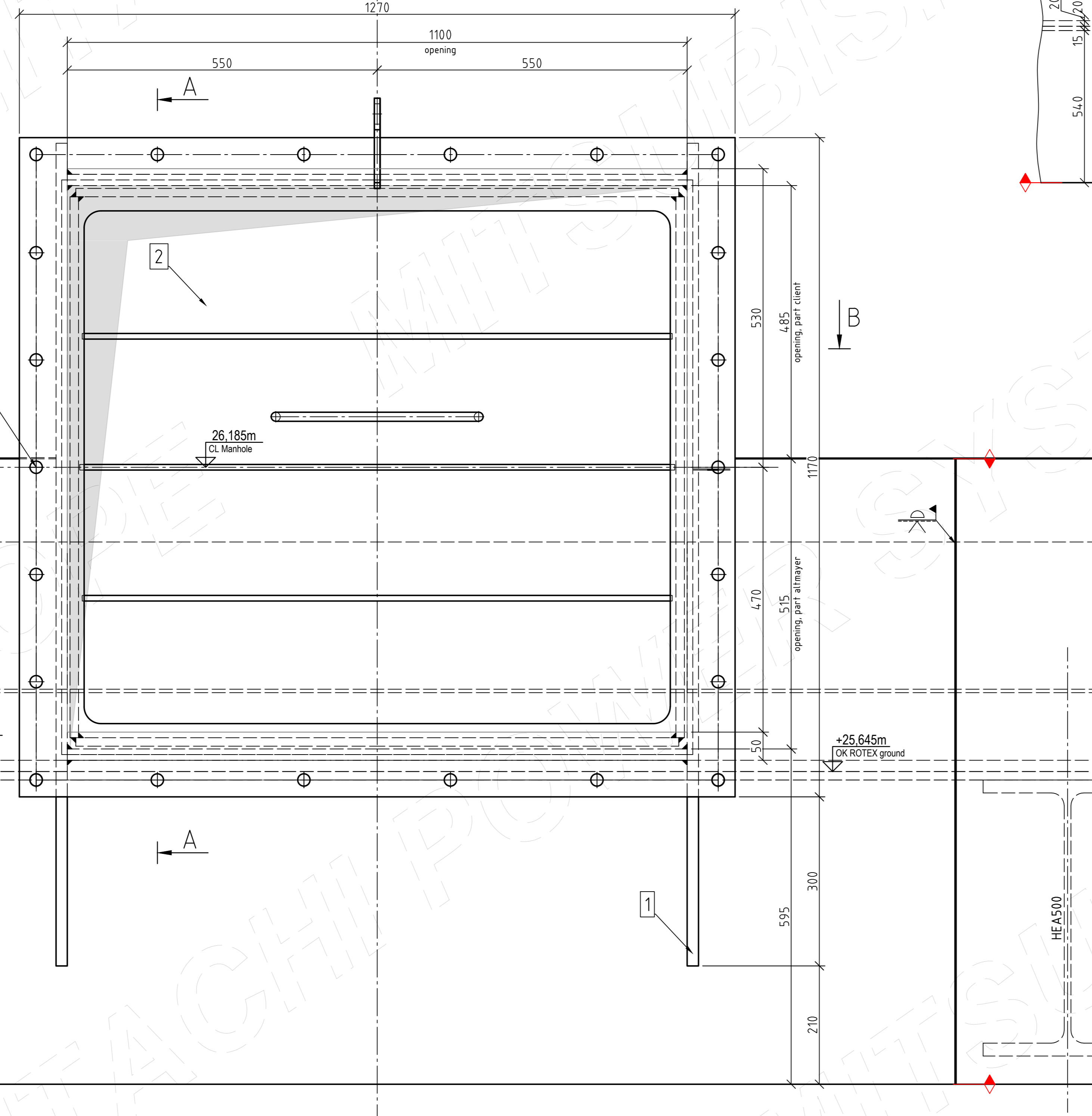
View frontal

Section A-A

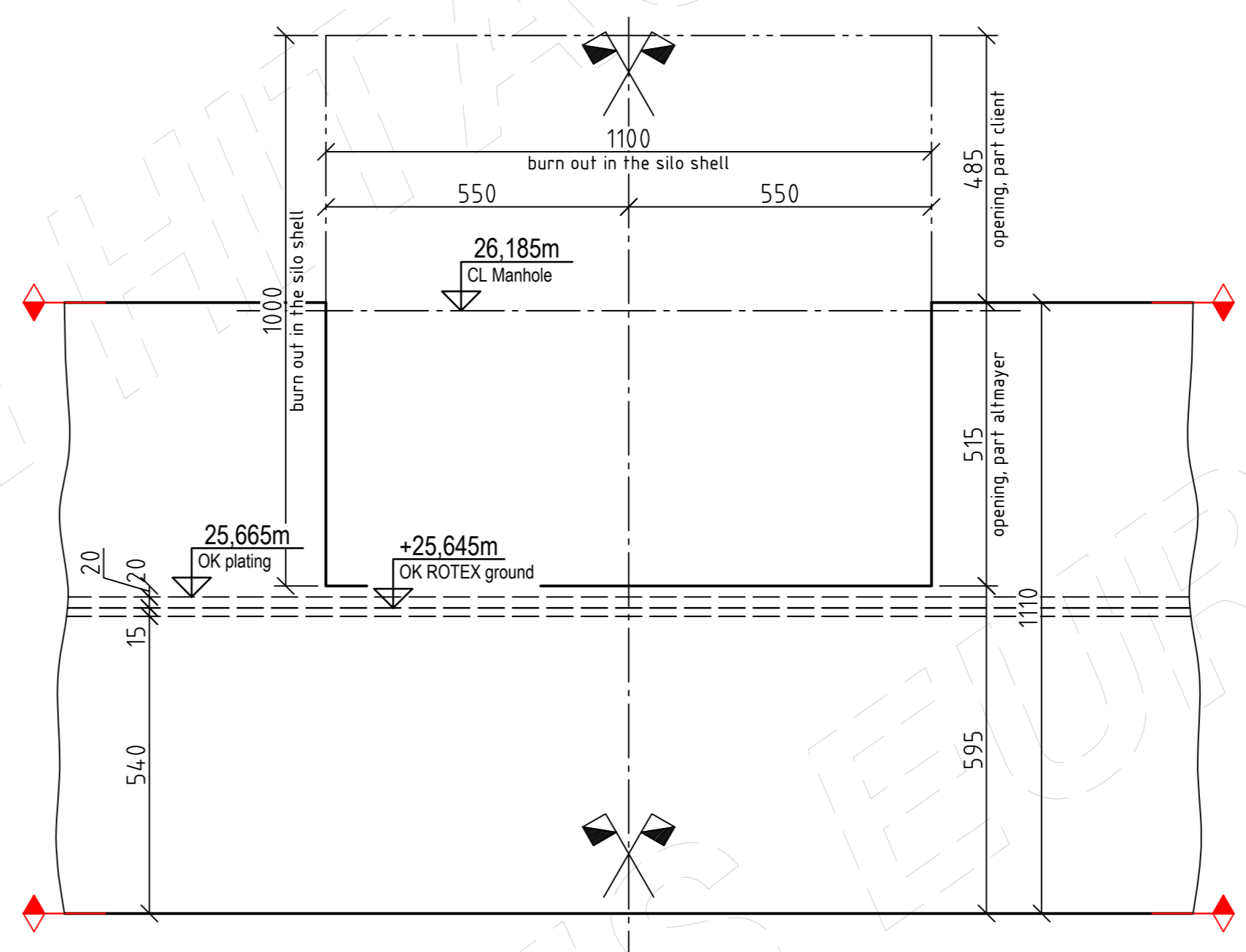


Opening of 1100x485mm burn by client!

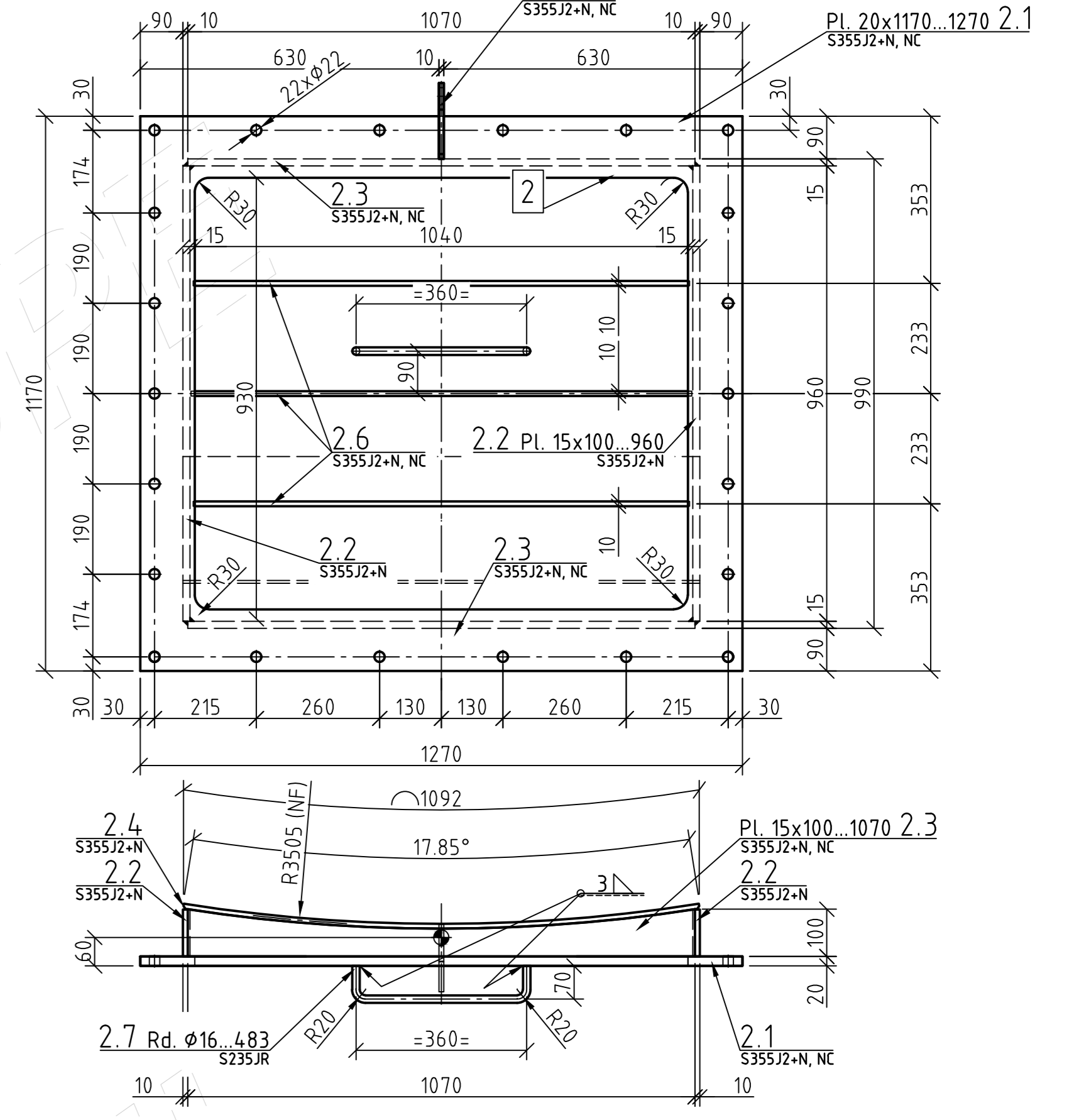
Note:  
8x manhole delivery by altmayer  
at 270° for silo:  
50HF A10BB001, 50HF A20BB001,  
50HF A30BB001, 50HF A40BB001  
at 90° for silo:  
50HF A50BB001, 50HF A60BB001,  
50HF A70BB001, 50HF A80BB001



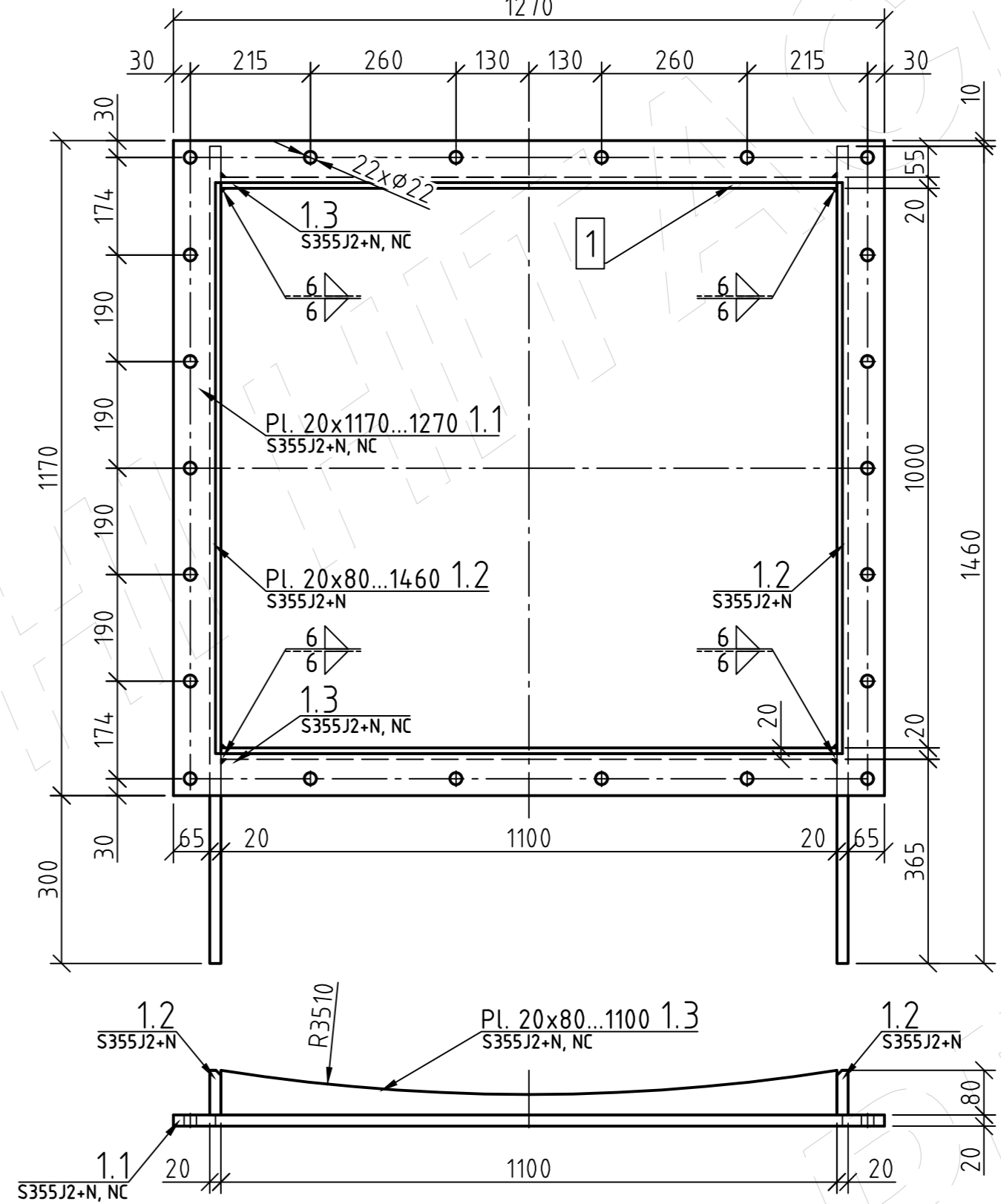
Cut-out manhole



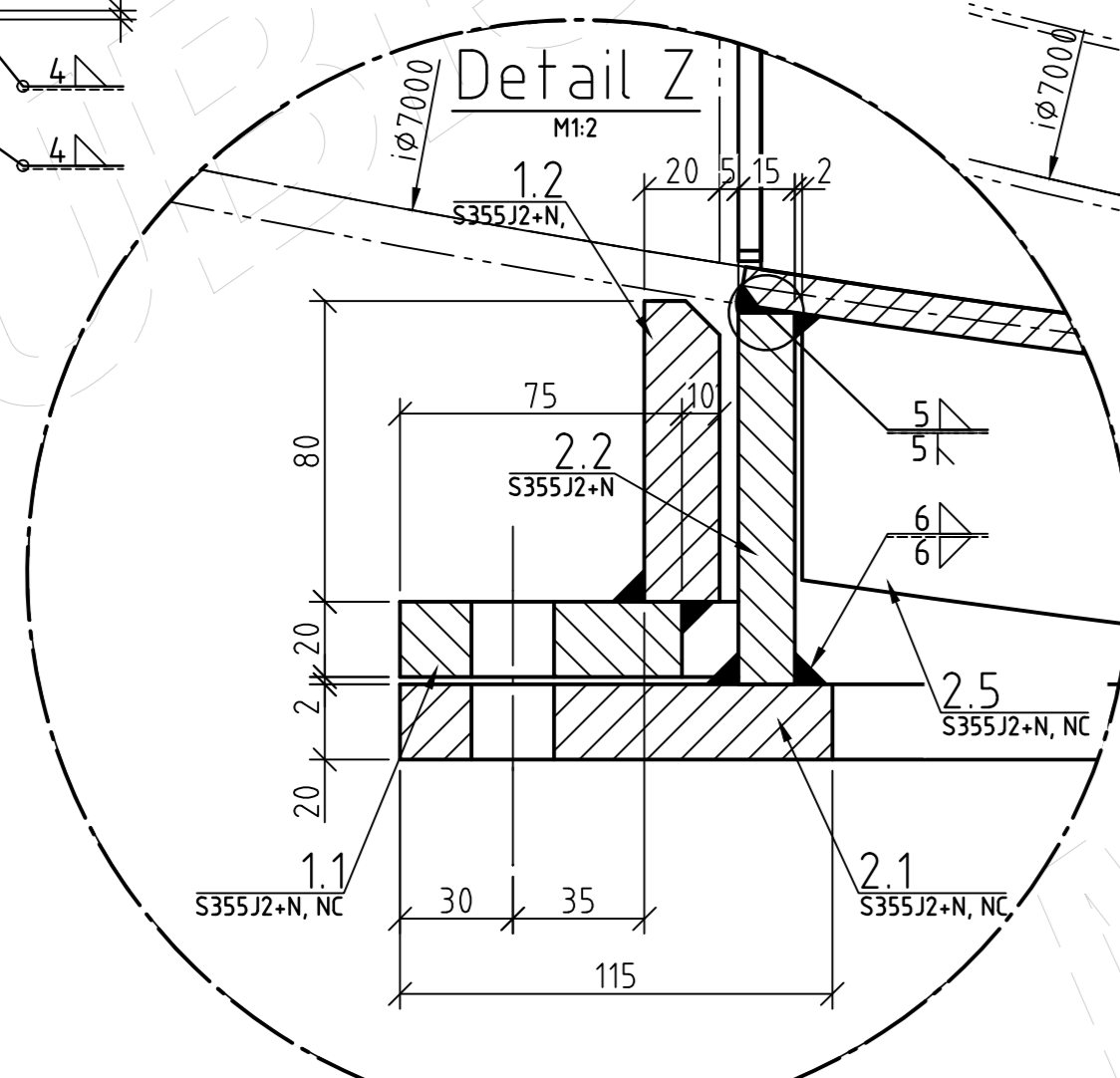
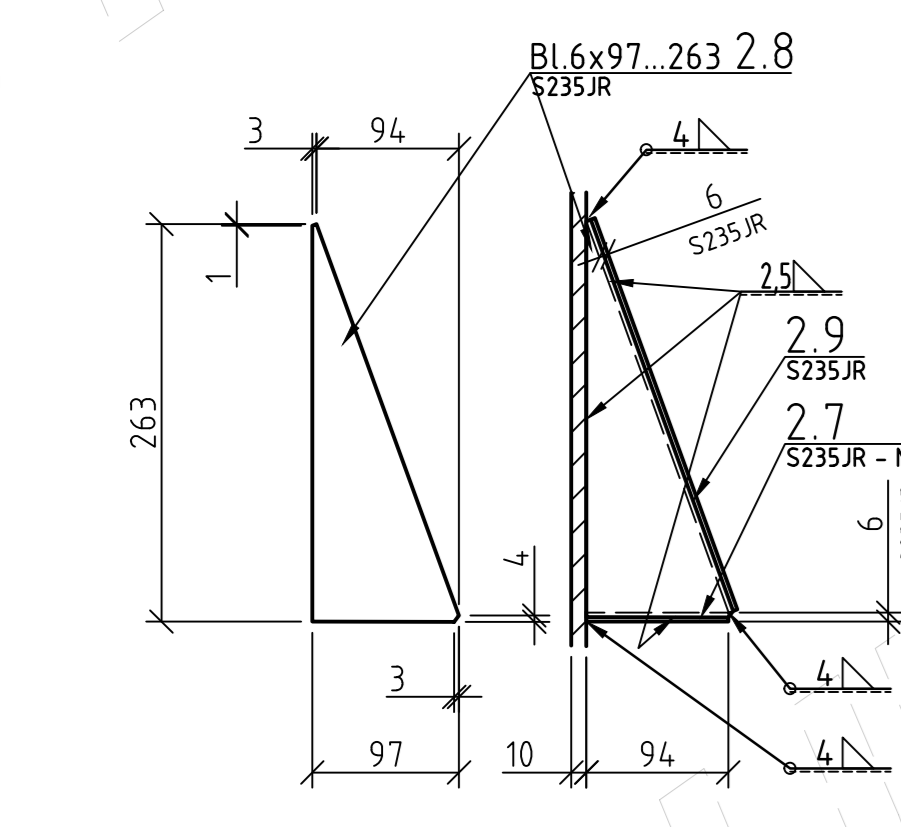
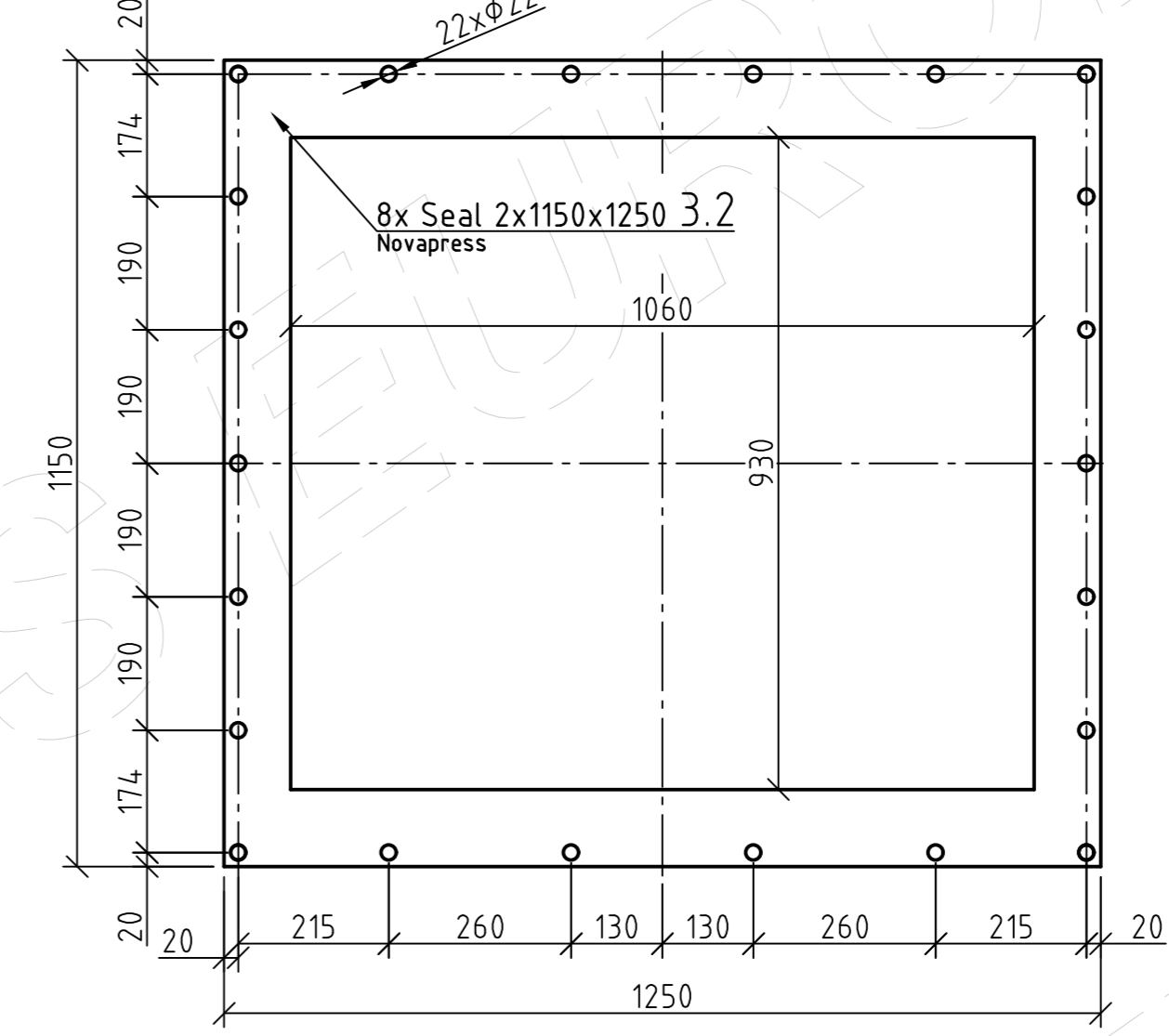
Manhole cover



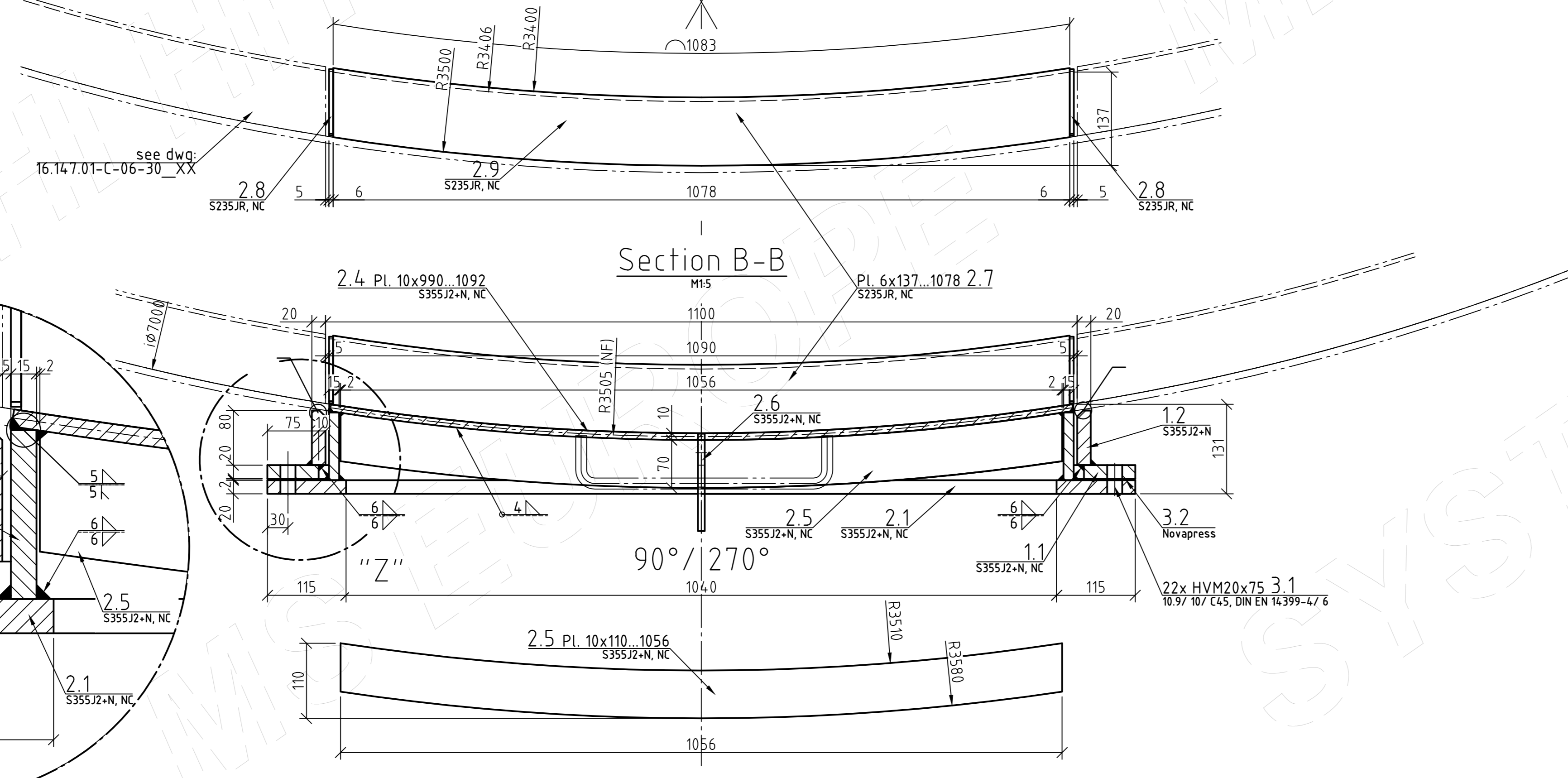
Manhole



Sealing



Section B-B



Oberflächenbehandlung (Surface treatment)

DIN EN ISO 12944  
Korrosivitätskategorie (Corrosivity): C4  
Sandstrahlen (sandblasting): SA 2 1/2 DIN EN ISO 8501-1:2007-12  
Grundierung (priming coat): Ethyl-Zink-Silicat 2K (Hempel Galvosil 15700) RAL % - 75 µm (Silbergrau / silver grey)  
Zwischenanstrich (Intermediate coat): Epoxidharz, 2K (Hempadur Mastic 45882) RAL - 120 µm  
Deckanstrich (finish coat): Epoxidharz, 2K (Hempadur Mastic 45882) RAL 7030 - 120 µm (Steingrau / Stone grey)

Kantenvorbereitung (Edge preparation)

Alle Kanten gemäß EN ISO 12944 bearbeiten!  
All edges in accordance with EN ISO 12944 ed2

REFERENCE DRAWINGS		DRAWING NO.
Parts list manhole 1100x1000mm for silo Ø7000		4311-M-001-IG05-00001
Welding and inspection plan Rotex Ø7000, Part 1		4311-M-001-IC10-00008

PTOLEMAIS UNIT V  
660 MW POWER PLANT  
CONTRACT DMKT - 11 09 5052  
PUBLIC POWER CORPORATION S.A.

CONTRACTOR  
**TERNA S.A.**  
85 MESOGEION AVE., 115 26 ATHENS, GREECE  
Tel.: +30 210 69 68 000, Fax: +30 210 69 68 099  
e-mail: terna@terna.gr

SUBCONTRACTOR  
**altmayer**  
MITSUBISHI HITACHI POWER SYSTEMS EUROPE

TITLE  
Ptolemais unit V power plant  
Manhole 1100x1000mm for silo Ø7000

SCALE  
DRAWING NO.  
SHEET  
REV. NO.

HV-Garnitur	M12	M16	M20	M24	M27	M30	M36
Vor-Anschraumbolzen M <sub>20</sub> -275 M <sub>24</sub> -300 M <sub>27</sub> -350 M <sub>30</sub> -400 M <sub>36</sub> -500	75	190	340	600	940	1250	2100
Anschraumbolzen 100% M <sub>20</sub> -PM6	100	250	450	800	1250	1650	2800

by client  
by altmayer

All weld dimensions are a-dimensional!  
All fillet welds not specified a = 4mm

Alle Schweißnähte sind a-Maße!  
Alle nicht bezeichneten Kehlnähte mm, a=4mm