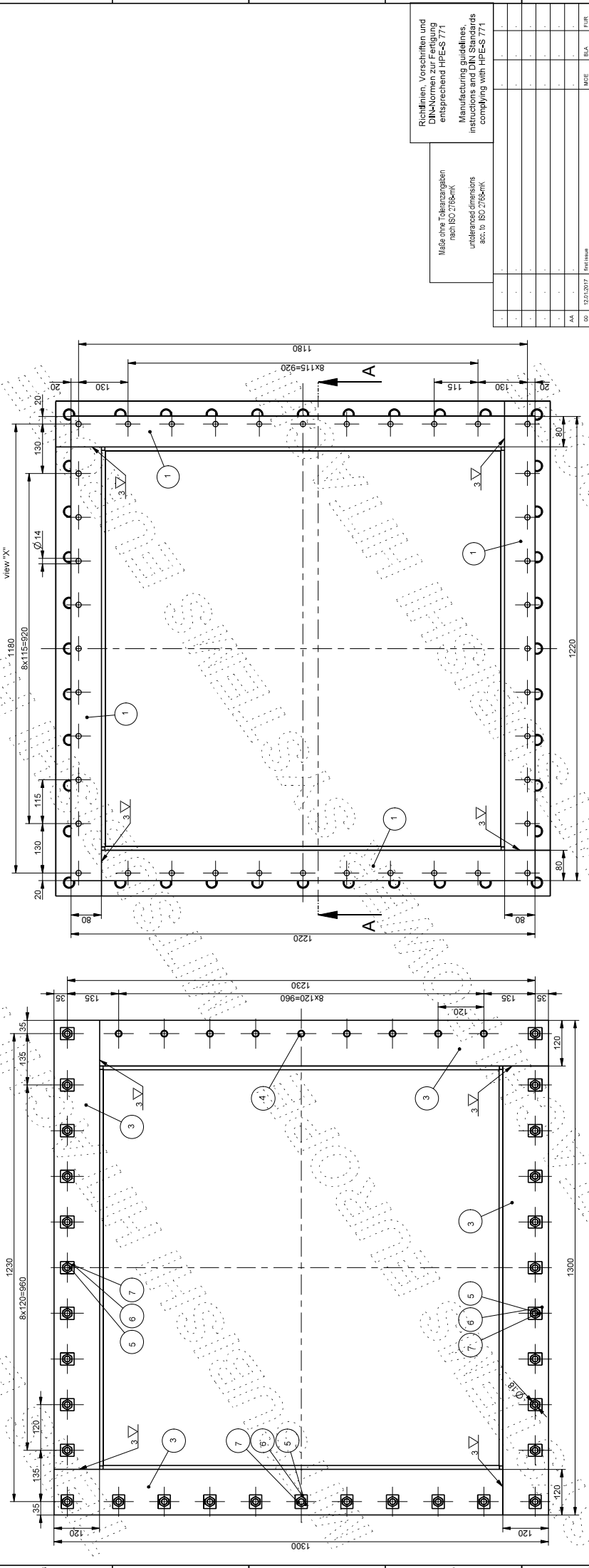


1	2	3	4	5	6	7	8	9	10	11	12
Zeichnungs-Nr. drawing-no.	kg/Stück kg/pc	note	Bemerkung	Norm standard	Dicke thickness	Benennung	denomination	Pos. Stck. item qty	System Bezeichnung system denomination	System Bezeichnung system denomination	Pos. Stck. item qty
28.153	7.04			1.4301	10	blech	plate	4	SCH_ZWST_AS_BLECH	SCH_ZWST_AS_BLECH	1
60.203	15.05			1.4301	10	blech	plate	4	SCH_ZWST_AS_BLECH2	SCH_ZWST_AS_BLECH2	2
43.663	10.92			n.v.	184	blech	plate	4	SCH_ZWST_AS_BLECH3	SCH_ZWST_AS_BLECH3	3
0.846	0.09			EN ISO 4017	36	Sechskantschraube M16	hexagon head screw M16	4	SCH_ZWST_AS_SKT_SCHRAUBE_4017	SCH_ZWST_AS_SKT_SCHRAUBE_4017	4
3.891	0.13			EN ISO 4017	55	Sechskantschraube M16	hexagon head screw M16	31	SCH_ZWST_AS_SKT_SCHR_4017_M16	SCH_ZWST_AS_SKT_SCHR_4017_M16	5
0.896	0.03			DIN.154	17,5	Scheibe 17,5	washer 17,5	6	SCH_ZWST_AS_SCHEIBE_434_SCHRAEG	SCH_ZWST_AS_SCHEIBE_434_SCHRAEG	6
1.229	0.04			EN ISO 4032	8	Sechskantmutter M16	hexagon nut M16	31	SCH_ZWST_AS_SKT_MUTTER_4032_M16	SCH_ZWST_AS_SKT_MUTTER_4032_M16	7
0	0			n.v.		Dichtschm. Ø 10mm, L=15m	sealing cord Ø 10mm, L=15m	1	SCH_ZWST_AS_DICHTSCHNUR	SCH_ZWST_AS_DICHTSCHNUR	8
0.42	0.01			EN ISO 7090	40	Scheibe A17	washer A17	40	SCH_ZWST_AS_SCHEIBE_7090	SCH_ZWST_AS_SCHEIBE_7090	9
Gesamtgewicht /total weight (kg) = 139,3											



Measures taken according to
nach ISO 2768-mK

Richtlinien, Vorschriften und
DIN-Normen zur Fertigung
entsprechend HPE-S 771

Manufacturing guidelines,
instructions and DIN Standards
complying with HPE-S 771

RES. DATE: 12/2/2017

PROJ. OWNER: PUBLIC POWER CORPORATION S.A.

DESCRIPTION: PTOLEMAIS UNIT V
660 MW POWER PLANT
CONTRACT DMKT - 11 09
5052

DATE: 12/2/2017

BY: MCE

CHECKED: BIA

APPROVED: FUR

TERNA SA

85 MESOGEION AVE., 115 26 ATHENS, GREECE
Tel.: +30 210 69 66 000 Fax: +30 210 69 68 099
email: termsa@termsa.gr

SUBCONTRACTOR: MITSUBISHI HEAVY INDUSTRIAL POWER SYSTEMS EUROPE

PROJECT NO.: N-100170-MC-09-IG04-0000-300

Shop drawing
chute after expansion joint

SCALE: 1:5

SHEET: 01 of 01

REV. NO.: 00