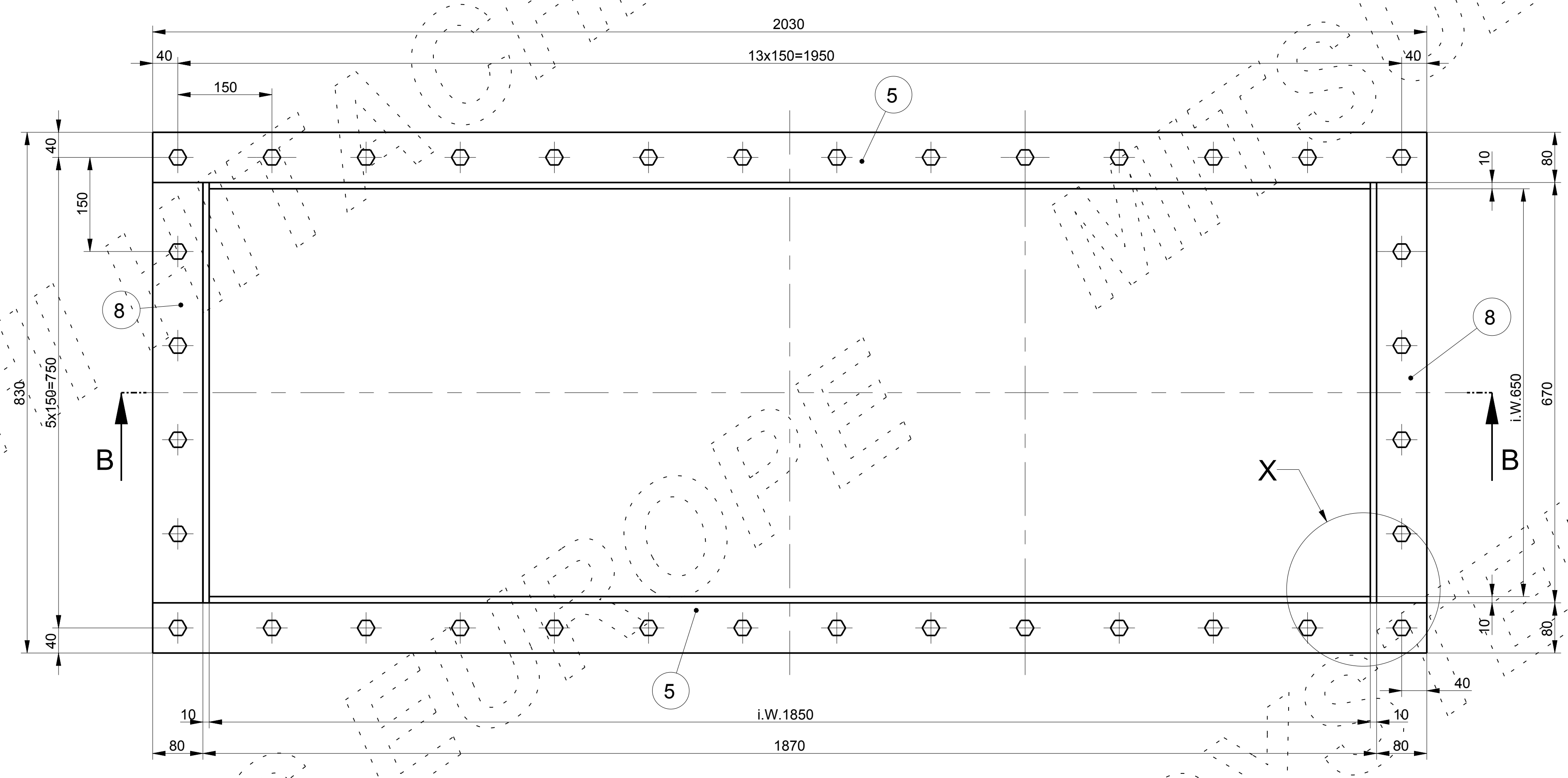
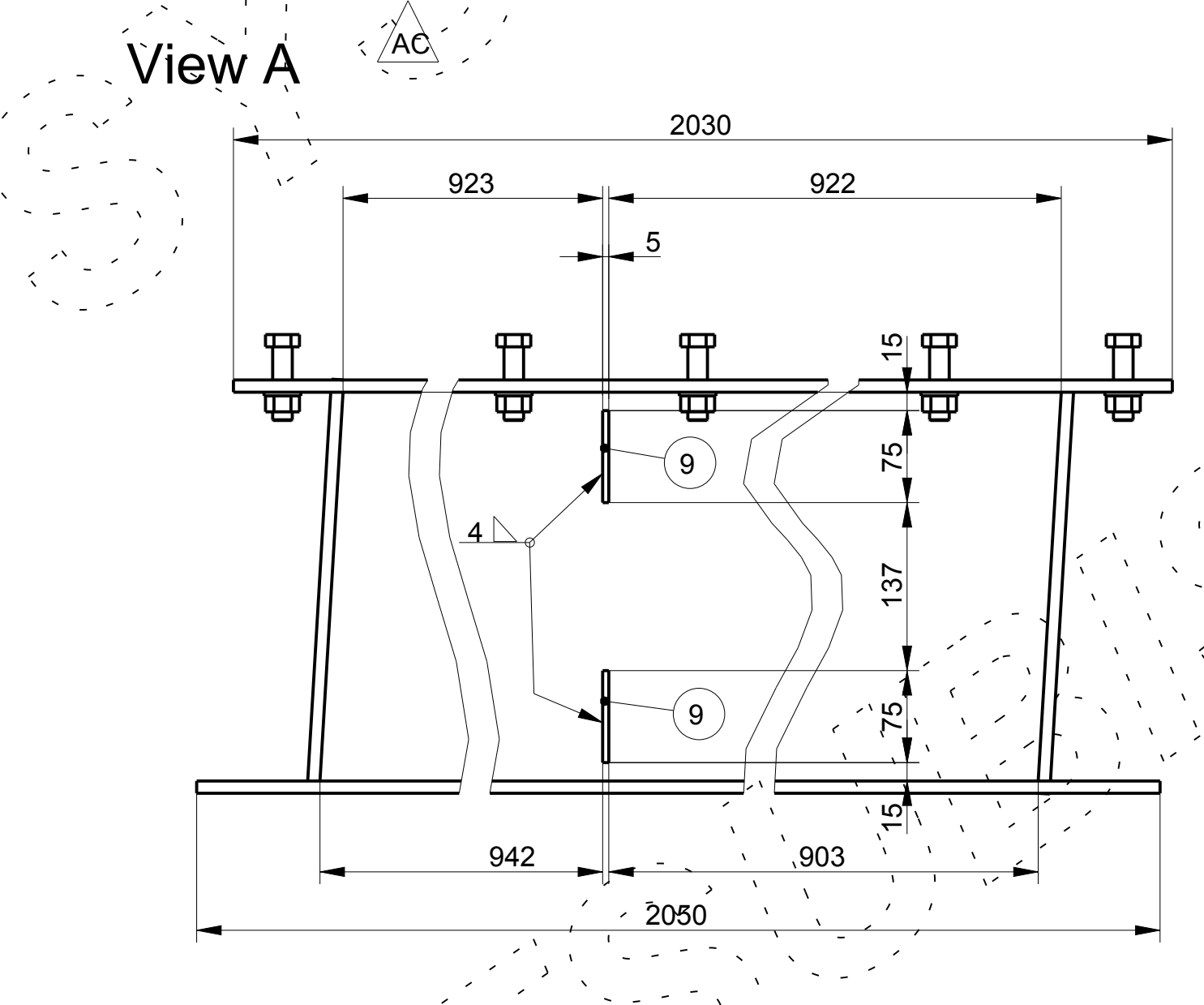
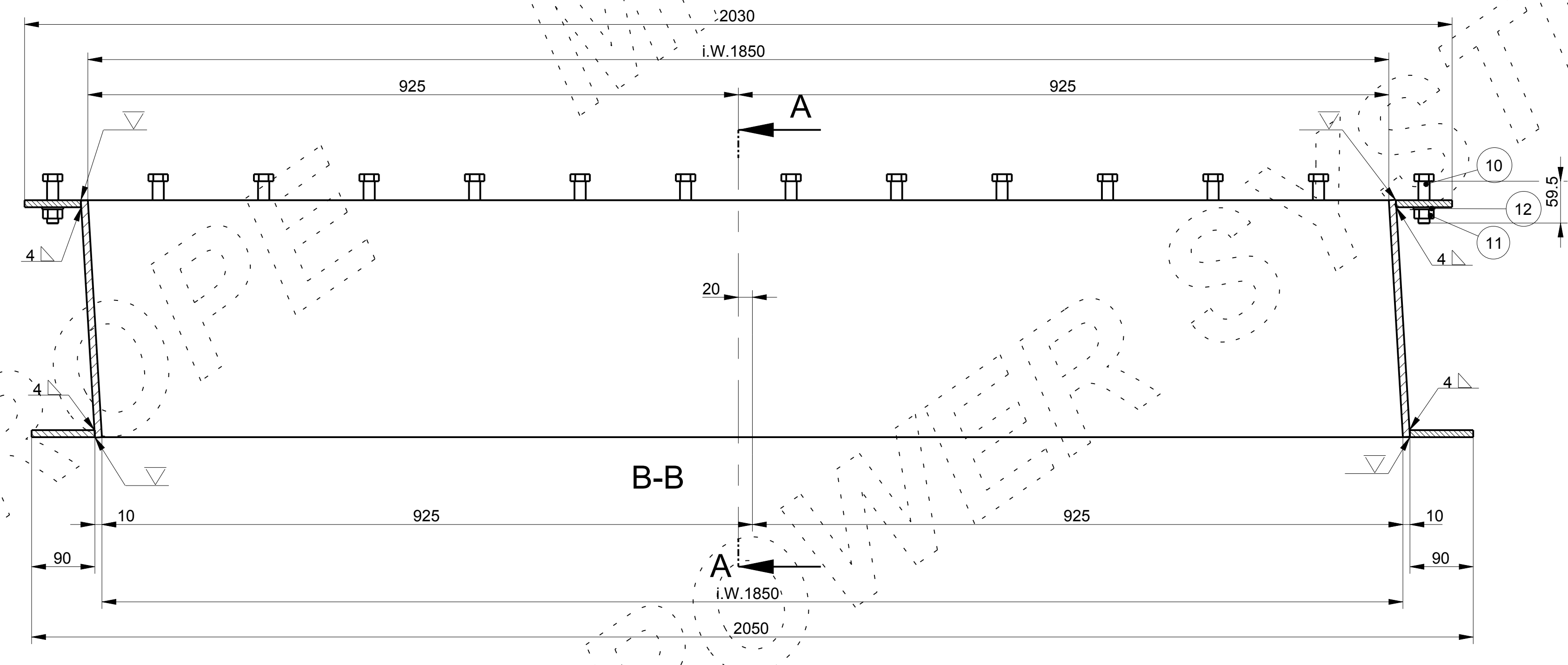
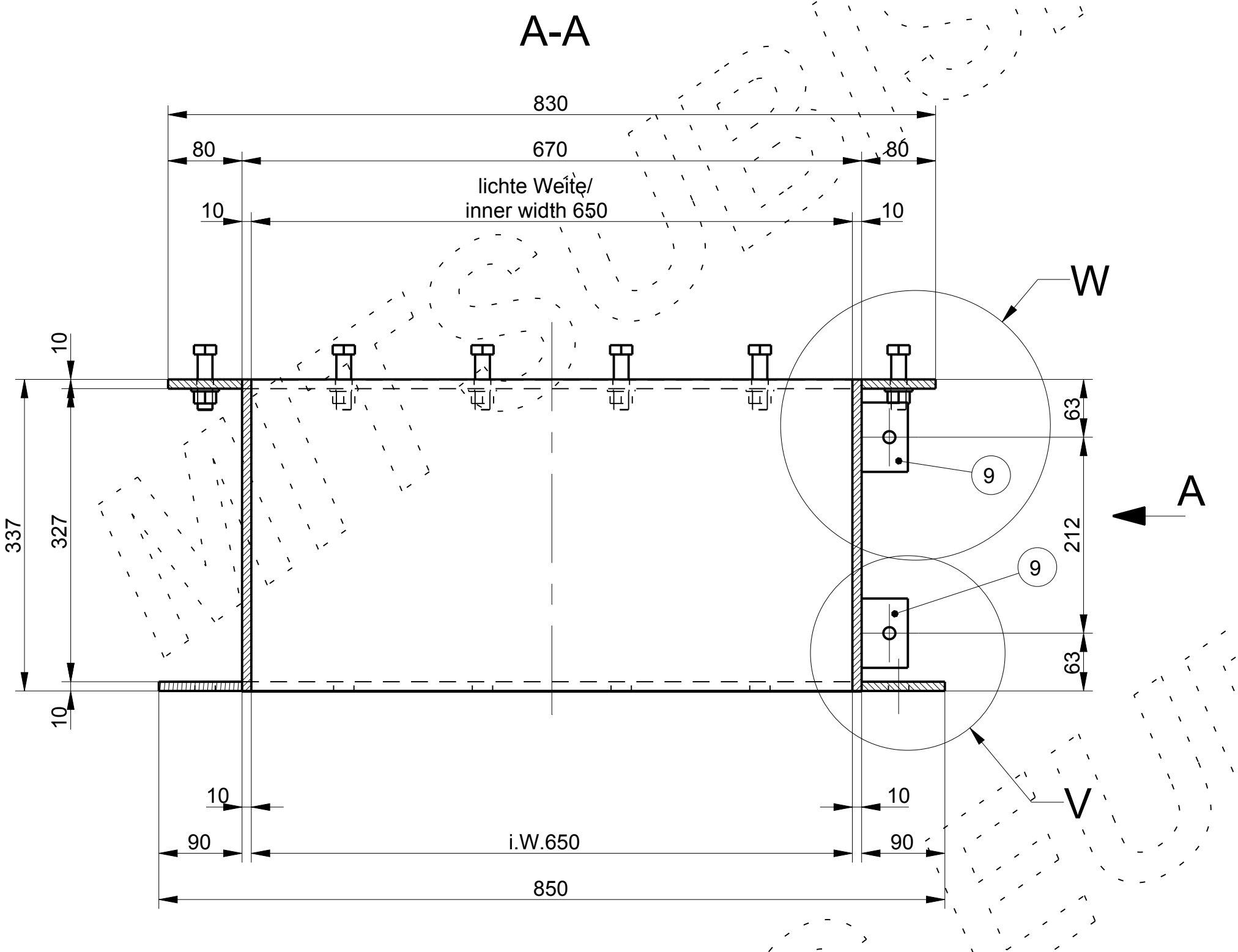
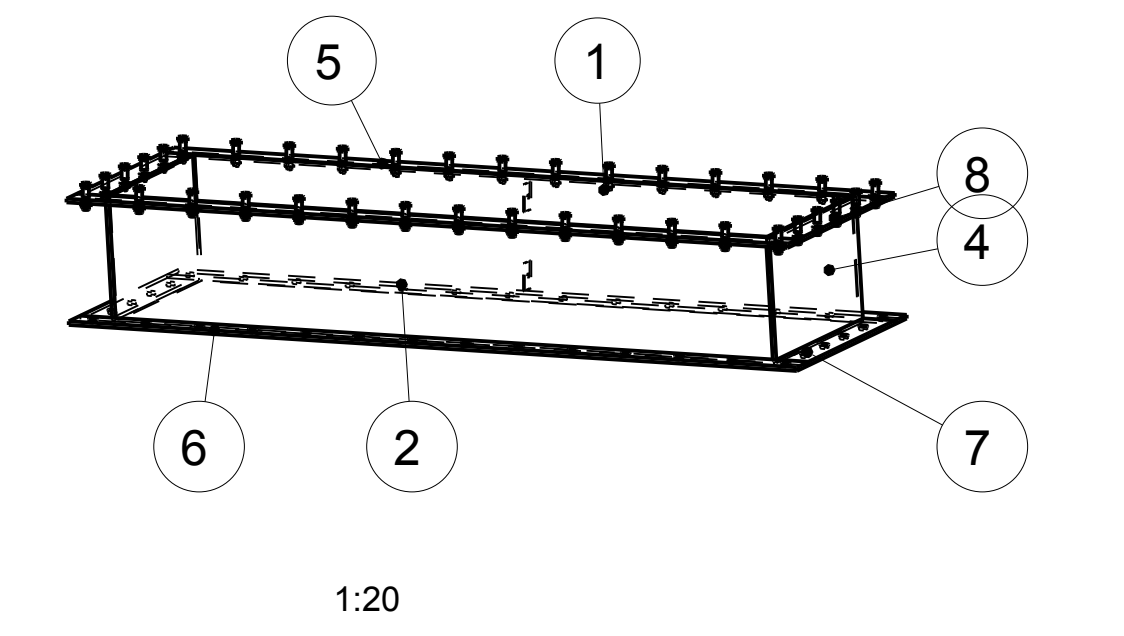
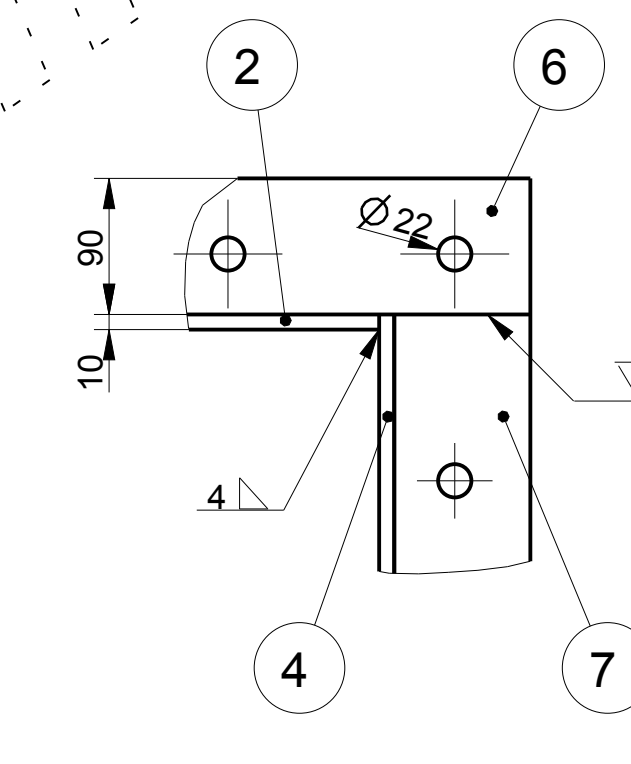
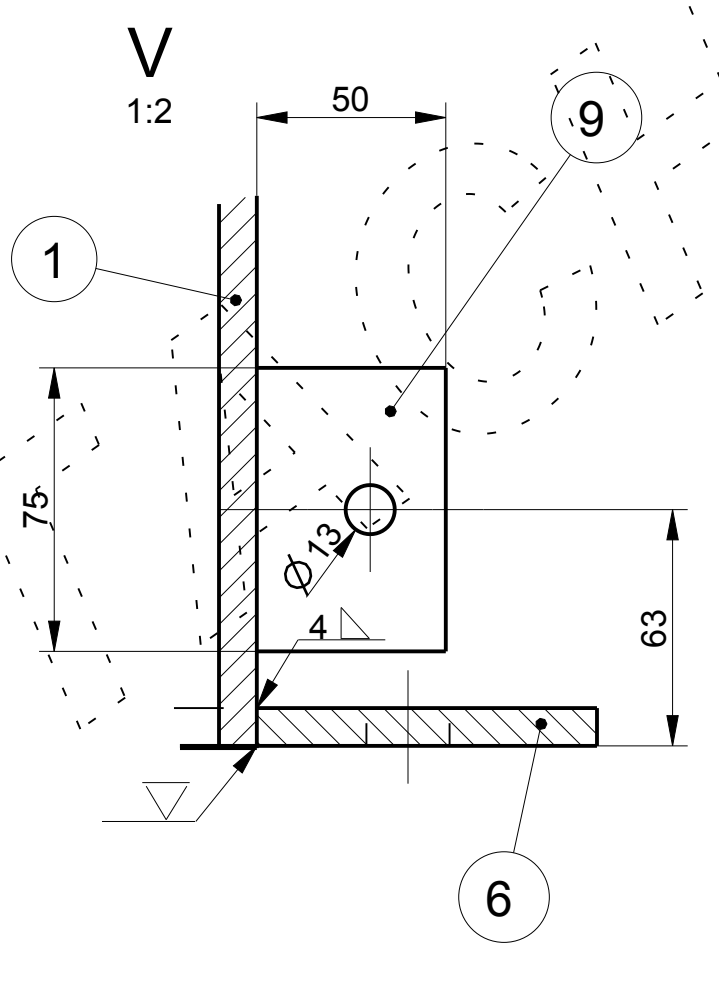
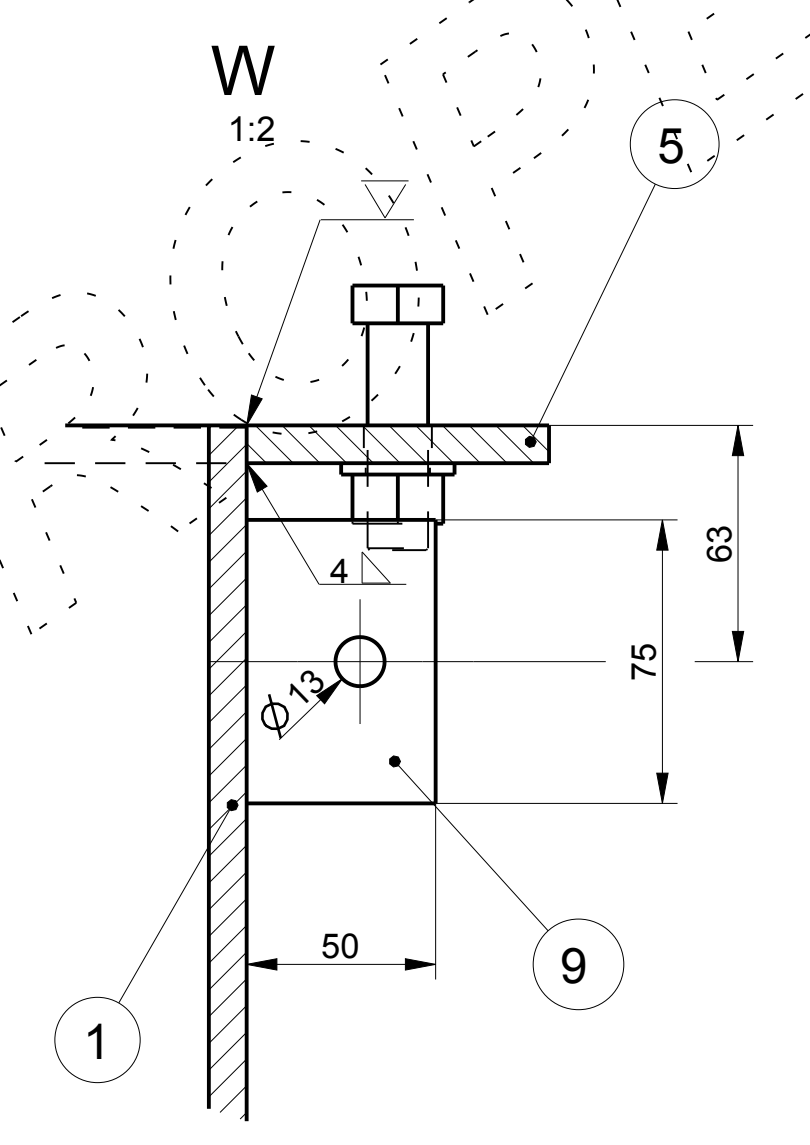
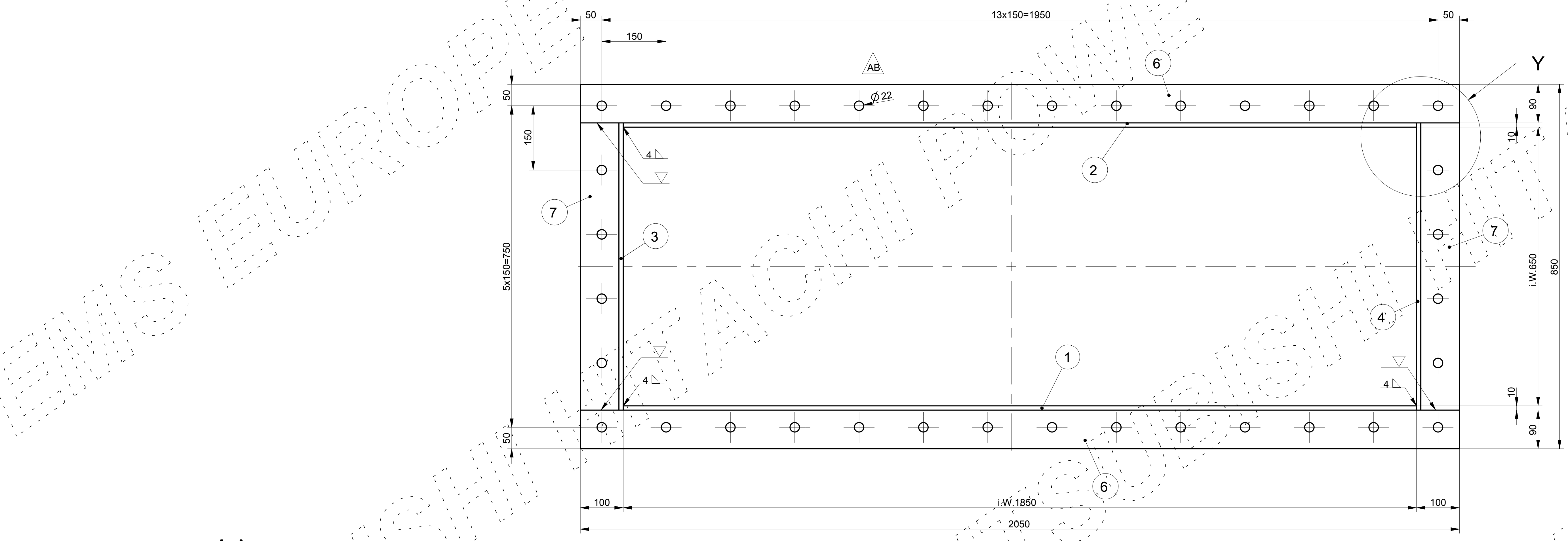


POS. Item	LZ (mm 1)	STUECK quantity	BENENNUNG	description	Dicke size	Breite width	Laenge length	kg/Stück kg/pc	GEW. [kg] weight	Zeichnungs-Nr. drawing-no.	MATERIAL material	Material-Nr. material no.	NORM standard	BEMERKUNGEN remarks
1		1	Blech	plate	10	337	1850	49.25	49.3		XSCN18-10	1.4301	DIN 10029	
2		1	Blech	plate	10	337	1850	49.25	49.3		XSCN18-10	1.4301	DIN 10029	
3		1	Blech	plate	10	337.6	670	17.87	17.9		XSCN18-10	1.4301	DIN 10029	
4		1	Blech	plate	10	337.6	670	17.87	17.9		XSCN18-10	1.4301	DIN 10029	
5		2	Flachstahl	flat bar	10	80	2030	12.55	25.1		XSCN18-10	1.4301	DIN EN 10058	
6		2	Flachstahl	flat bar	10	90	2050	14.16	28.3		XSCN18-10	1.4301	DIN EN 10058	
7		2	Flachstahl	flat bar	10	90	670	4.64	9.3		XSCN18-10	1.4301	DIN EN 10058	
8		2	Flachstahl	flat bar	10	80	670	4.15	8.3		XSCN18-10	1.4301	DIN EN 10058	
9		2	Flachstahl	flat bar	5	75	50	0.15	0.3		XSCN18-10	1.4301	DIN EN 10029	
10		36	Skt.-Schraube M16x60	hex. bolt M16x60	16	60	0	0.13	4.8		8.8		DIN EN ISO 4017	
11		36	Skt.-Mutter M16	hex. nut M16	16	0	0	0.03	1.1		8.8		DIN EN ISO 4032	
12		36	Scheibe A17	washer A17	17	3	0	0.01	0.4		8.8		DIN EN ISO 7090	
									Gesamtgewicht [kg] total weight [kg]	211.9				

\*) Kennzeichen Lieferzustand  
 F = Versanfertigungsguide item of assembled unit  
 L = Versanfertigt / not assembled item (single item)  
 Teile ohne Kennzeichen = Anbauteil an Führungsteil / not marked items are assembled on guide item

Stueckzahlen gelten fuer eine Baugruppe. Gewichte sind rechnerische Konstruktionsgewichte. Die Komponenten Pos. gilt in Verbindung mit der Materialliste.  
 Quantity is valid for one assembly unit. Indicated weights are calculated design weights. Component item in connection with material list.



- ANNOTATIONS:**
- all edges with an ehd coating are rounded with r=2 mm
  - all gaps are closed by welding
  - untoleranced dimensions for mechanical processing acc. DIN ISO 2768-1 mK
  - untoleranced dimensions for welded parts acc. DIN13920, length A, angle B, straightness F
  - thermal cut quality acc. DIN EN ISO 9013 331
  - quality of weldings acc. DIN EN ISO 5817-C

REV. NO.	DATE	DESCRIPTION	DESIGNED	CHECKED	APPROV.
AC	23.05.2017	View A changed			Knappm, Lupinski, Blasyk
AB	22.05.2017	diameter of lower drill pattern changed	Pauly	Lupinski	Blasyk
AA	22.05.2017	position of pos. 9 added	Pauly	Lupinski	Blasyk
00	04.05.2017	first issue	Pauly	Lupinski	Blasyk

PROJECT/TOWNER: PTOLEMAIS UNIT V  
 660 MW POWER PLANT  
 CONTRACT DMKT - 11 09  
 5052 PUBLIC POWER CORPORATION S.A.

CONTRACTOR: **TERNA S.A.**  
 85 MESOGEION AVE., 115 26 ATHENS, GREECE  
 Tel.: +30 210 69 68 000, Fax: +30 210 69 68 099  
 e-mail: terna@terna.gr

SUBCONTRACTOR: **MITSUBISHI HITACHI POWER SYSTEMS EUROPE**  
 SUBCONTRACTOR DWG. NO.: N-100170-M-O08-IG04-00001-AC

TITLE: Transition Chute  
 Belt Conveyor  
 Inlet Flange

SCALE: 1:5 DRAWING NO.: 4311-M-O08-IG04-00001 SHEET: 01 of 01 REV. NO.: AC

THIS DRAWING SHALL NEITHER BE DUPLICATED, TRANSFERRED NOR REVISED WITHOUT OUR PRIOR WRITTEN APPROVAL.  
 IT SHALL NOT BE MADE AVAILABLE TO THIRD PARTIES ANY AND ALL RIGHTS IN ACCORDANCE WITH THE GERMAN LAW  
 ON COPYRIGHT (URRG) AND GERMAN ACT AGAINST UNFAIR PRACTICES (URFG) SHALL REMAIN UNAFFECTED.