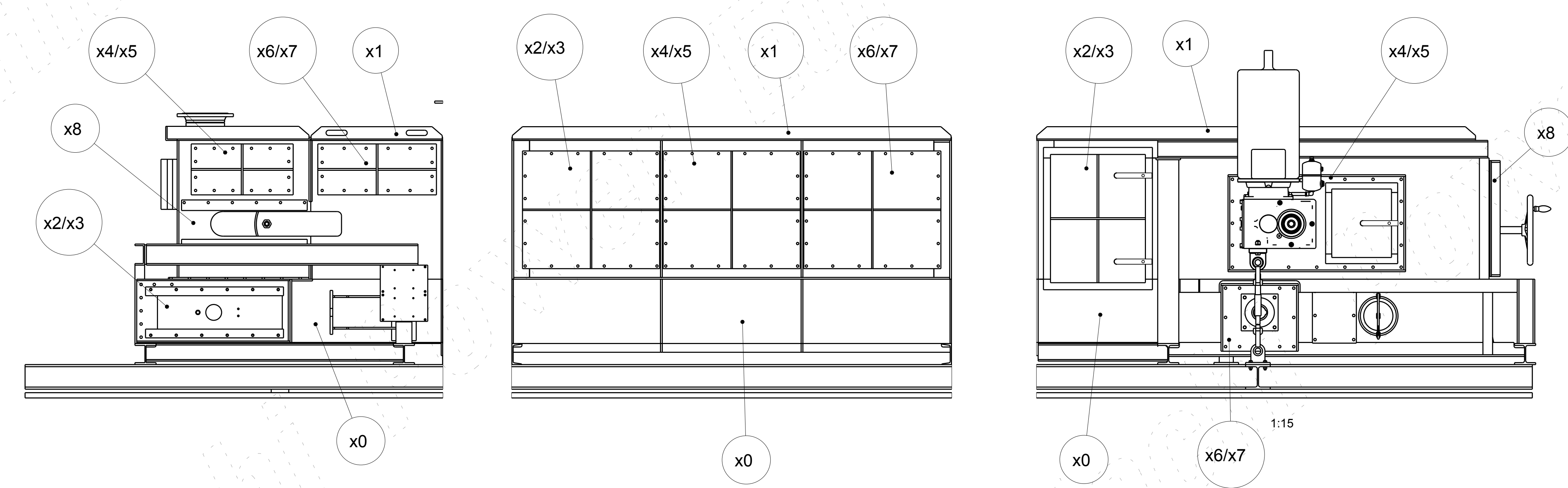


Labeling of non-loose parts

left / right
x: trough no.



POS. Item	LZ dom 1*)	STUECK quantity	BENENNUNG	description	GEW. (kg) weight	BEMERKUNGEN remarks
10	F		Gurtbandfördere RP P800x2500 ATEX Spannstation	P800x2500 ATEX tension station	1820	
11	L		Gurtbandfördere RP P800x750 Deckel A	P800x750 cover A	100	
20	F		Gurtbandfördere RP P800x2500 ATEX Trog E	P800x2500 ATEX trough E	1334	
21	L		Gurtbandfördere RP P800x2500 Deckel D	P800x2500 cover D	490	
30	F		Gurtbandfördere RP P800x2500 ATEX Trog B	P800x2500 ATEX trough B	1250	
31	L		Gurtbandfördere RP P800x2500 Deckel B	P800x2500 cover B	312	
40	F		Gurtbandfördere RP P800x2500 ATEX Trog C	P800x2500 ATEX trough C	1227	
41	L		Gurtbandfördere RP P800x2500 Deckel A	P800x2500 cover A	297	
50	F		Gurtbandfördere RP P800x2500 ATEX Trog D	P800x2500 ATEX trough D	1198	
51	L		Gurtbandfördere RP P800x2500 Deckel A	P800x2500 cover A	297	
60	F		Gurtbandfördere RP P800x2500 ATEX Trog D	P800x2500 ATEX trough D	1198	
61	L		Gurtbandfördere RP P800x2500 Deckel A	P800x2500 cover A	297	
70	F		Gurtbandfördere RP P800x2500 ATEX Trog D	P800x2500 ATEX trough D	1198	
71	L		Gurtbandfördere RP P800x2500 Deckel A	P800x2500 cover A	297	
80	F		Gurtbandfördere RP P800x1000 ATEX Trog A	P800x1000 ATEX trough A	548	
81	L		Gurtbandfördere RP P800x1000 Deckel A	P800x1000 cover A	125	
90	F		Gurtbandfördere RP P800x2500 ATEX Trog D	P800x2500 ATEX trough D	1198	
91	L		Gurtbandfördere RP P800x2500 Deckel A	P800x2500 cover A	297	
100	F		Gurtbandfördere RP P800x2500 ATEX Trog D	P800x2500 ATEX trough D	1198	
101	L		Gurtbandfördere RP P800x2500 Deckel A	P800x2500 cover A	297	
110	F		Gurtbandfördere RP P800x2500 ATEX Trog D	P800x2500 ATEX trough D	1198	
111	L		Gurtbandfördere RP P800x2500 Deckel A	P800x2500 cover A	297	
120	F		Gurtbandfördere RP P800x1500 ATEX Trog D	P800x1500 ATEX trough D	754	
121	L		Gurtbandfördere RP P800x1500 Deckel A	P800x1500 cover A	189	
130	F		Gurtbandfördere RP P800x1304 ATEX Adapterstation	P800x1304 ATEX adaptor station	548	
131	L		Gurtbandfördere RP P800x1304 Deckel A	P800x1304 cover A	169	
140	F		Gurtbandfördere RP P800x2500 ATEX Trog B	P800x2500 ATEX trough B	1250	
141	L		Gurtbandfördere RP P800x2500 Deckel C	P800x2500 cover C	316	
150	F		Gurtbandfördere RP P800x2500 ATEX Antriebsstation	P800x2500 ATEX drive station	2161	
151	L		Gurtbandfördere RP P800x2500 Deckel B	P800x2500 cover B	312	
					Gesamtgewicht [kg]	22372,8
					total weight [kg]	

1*) Kennzeichen Lieferzustand
F = Versandführungsteil / guide item of assembled unit
L = Versanddeckel / not assembled item (single item)
Teile ohne Kennzeichen = Anbauteil an Führungsteil / not marked items are assembled on guide item

KKS No.
5 OHFB10 AF001
5 OHFB80 AF001

00 19/04/2017 first issue

PTOLEMAIS UNIT V
660 MW POWER PLANT
CONTRACT DMKT - 11 09
5052

PUBLIC POWER CORPORATION S.A.

CONTRACTOR: **TERNA S.A.**
85 MESOGEION AVE., 115 26 ATHENS, GREECE
Tel.: +30 210 69 68 000, Fax: +30 210 69 68 099
e-mail: terna@terna.gr

SUBCONTRACTOR: **HITACHI Inspire the Next**
N-100170-M-005-IM02-0001-00

TITLE: Belt Conveyor - HFB10/80
P800 ATEX - 30 079 m
Overview - Labeling

SCALE: 1:30 DRAWING NO.: 4311-M-005-IM02-0001 SHEET: 01 of 01 REV. NO.: 00

THIS DRAWING SHALL NOT BE REPRODUCED, TRANSMITTED NOR REVISED WITHOUT OUR PRIOR WRITTEN APPROVAL.
IT SHALL NOT BE MADE AVAILABLE TO THIRD PARTIES AND ALL RIGHTS IN ACCORDANCE WITH THE GERMAN LAW ON COPYRIGHT (URRG) AND GERMAN ACT AGAINST UNFAIR PRACTICES (UWG) SHALL REMAIN UNAFFECTED.

