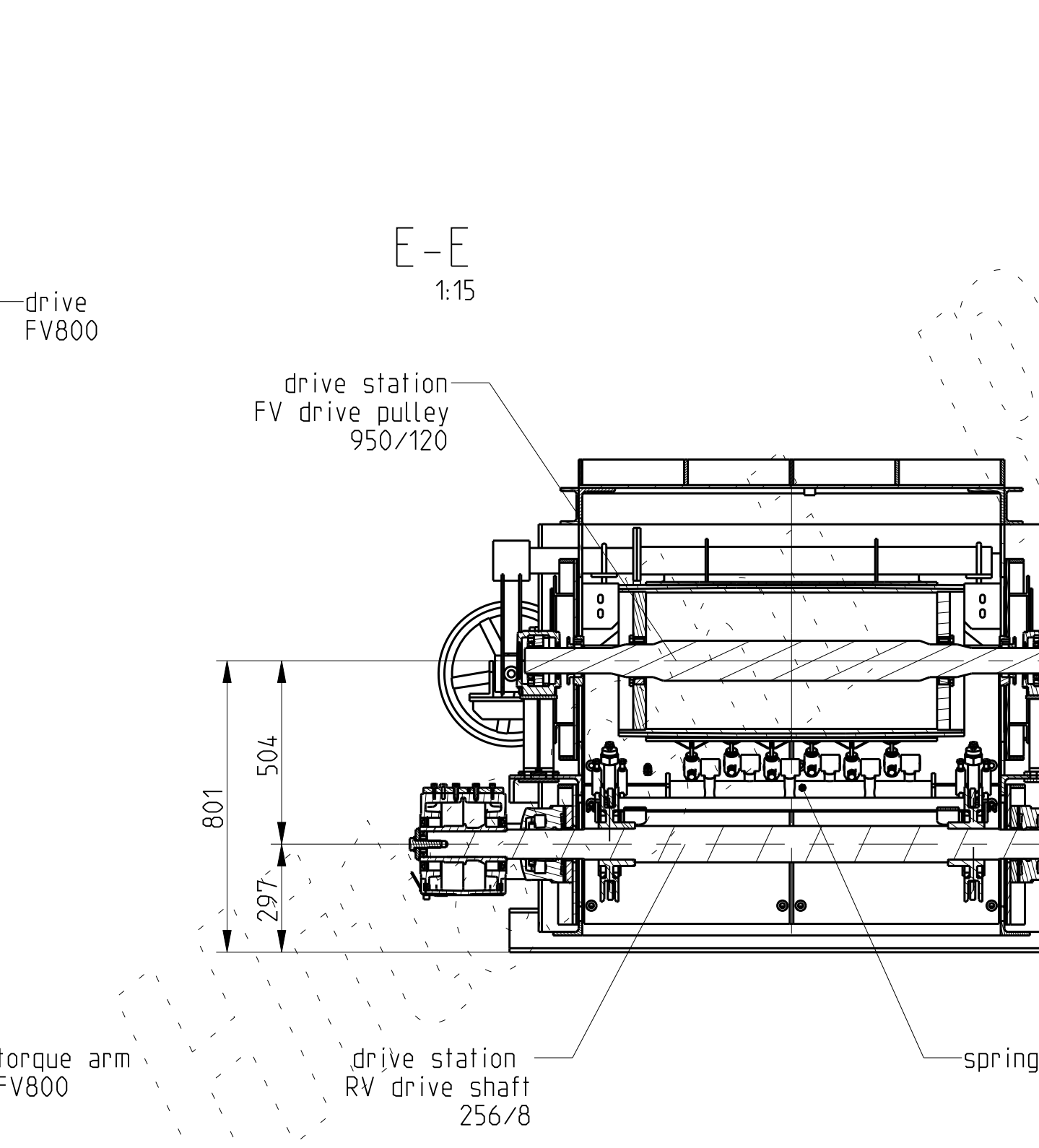
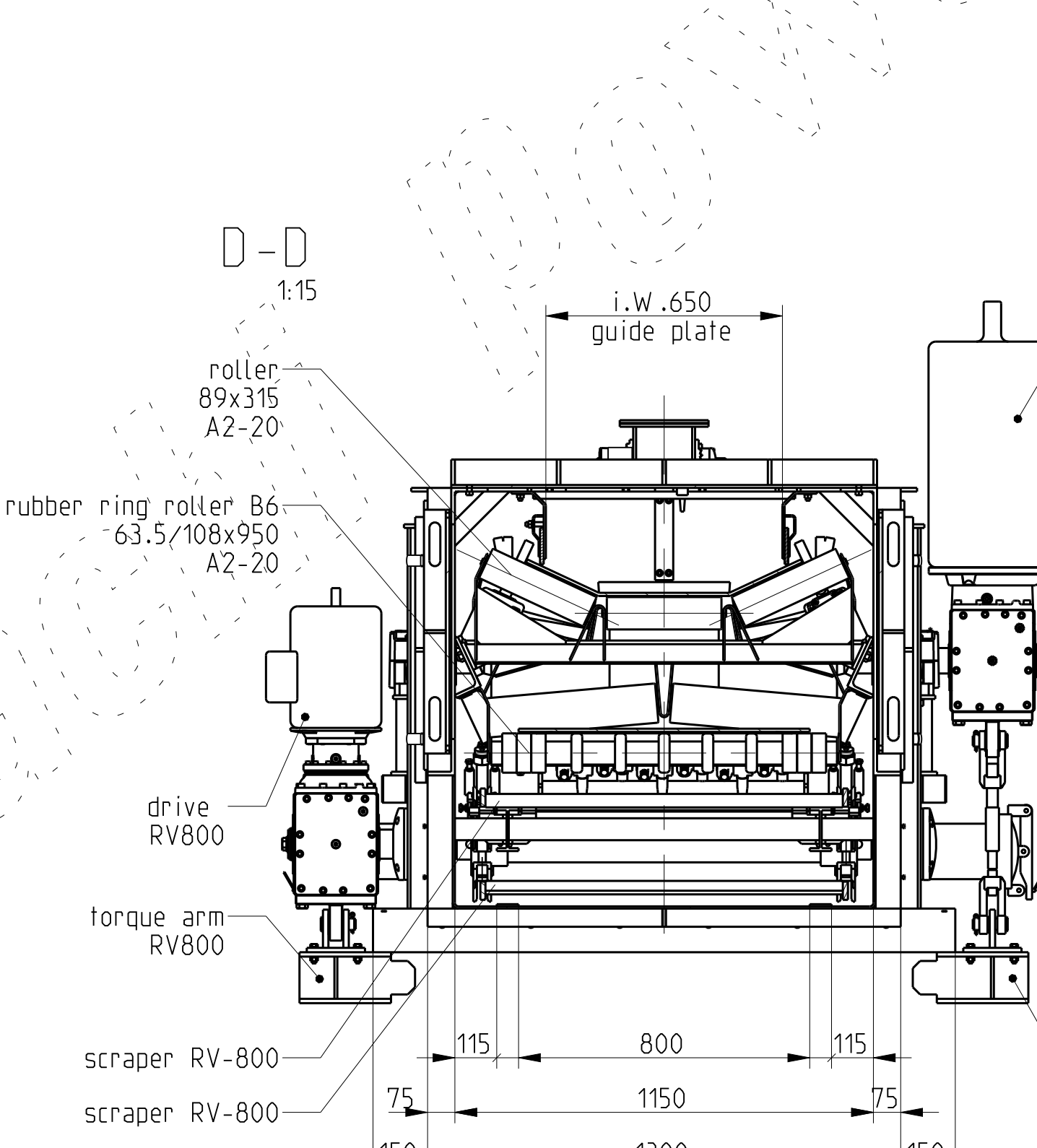
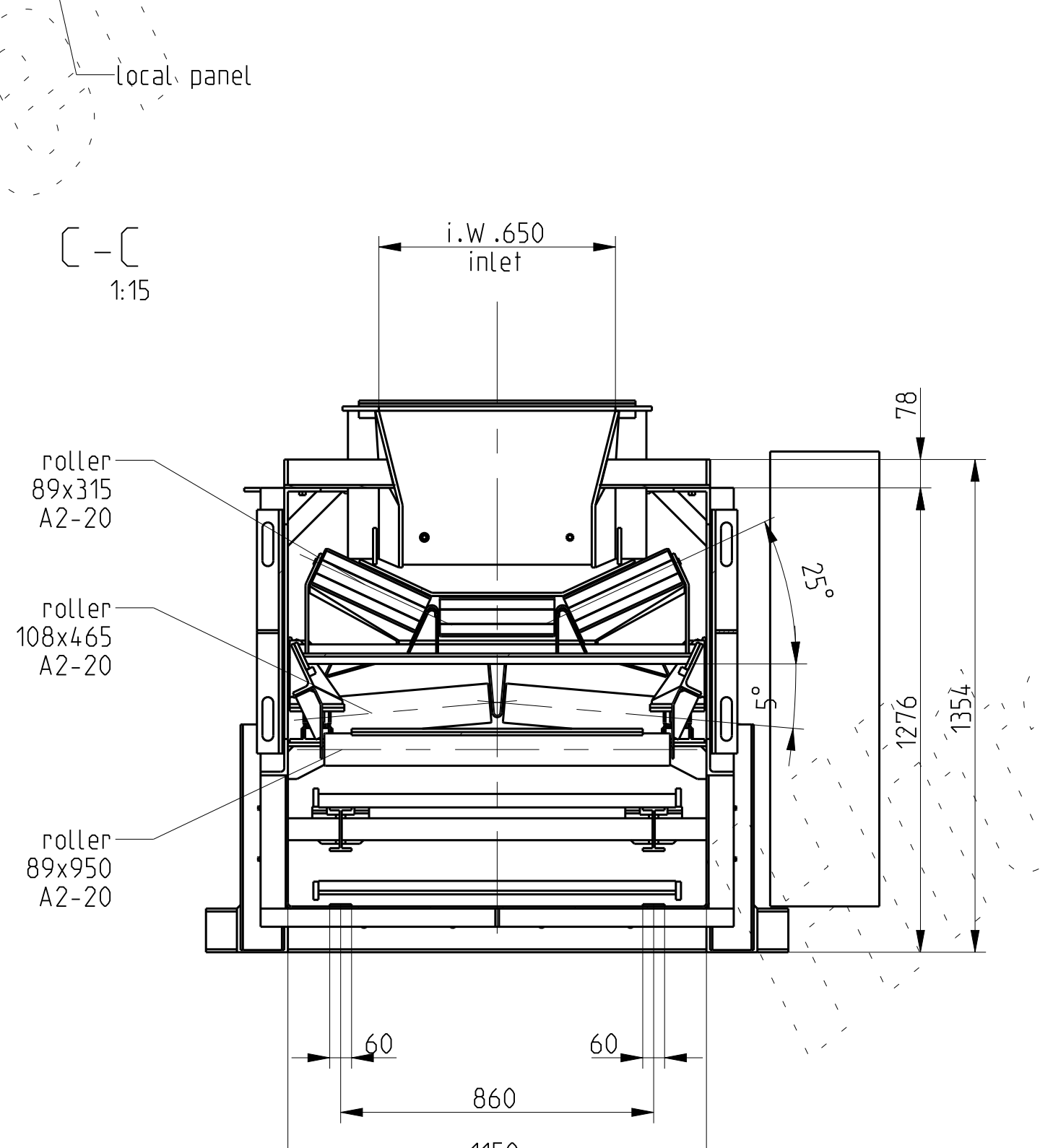
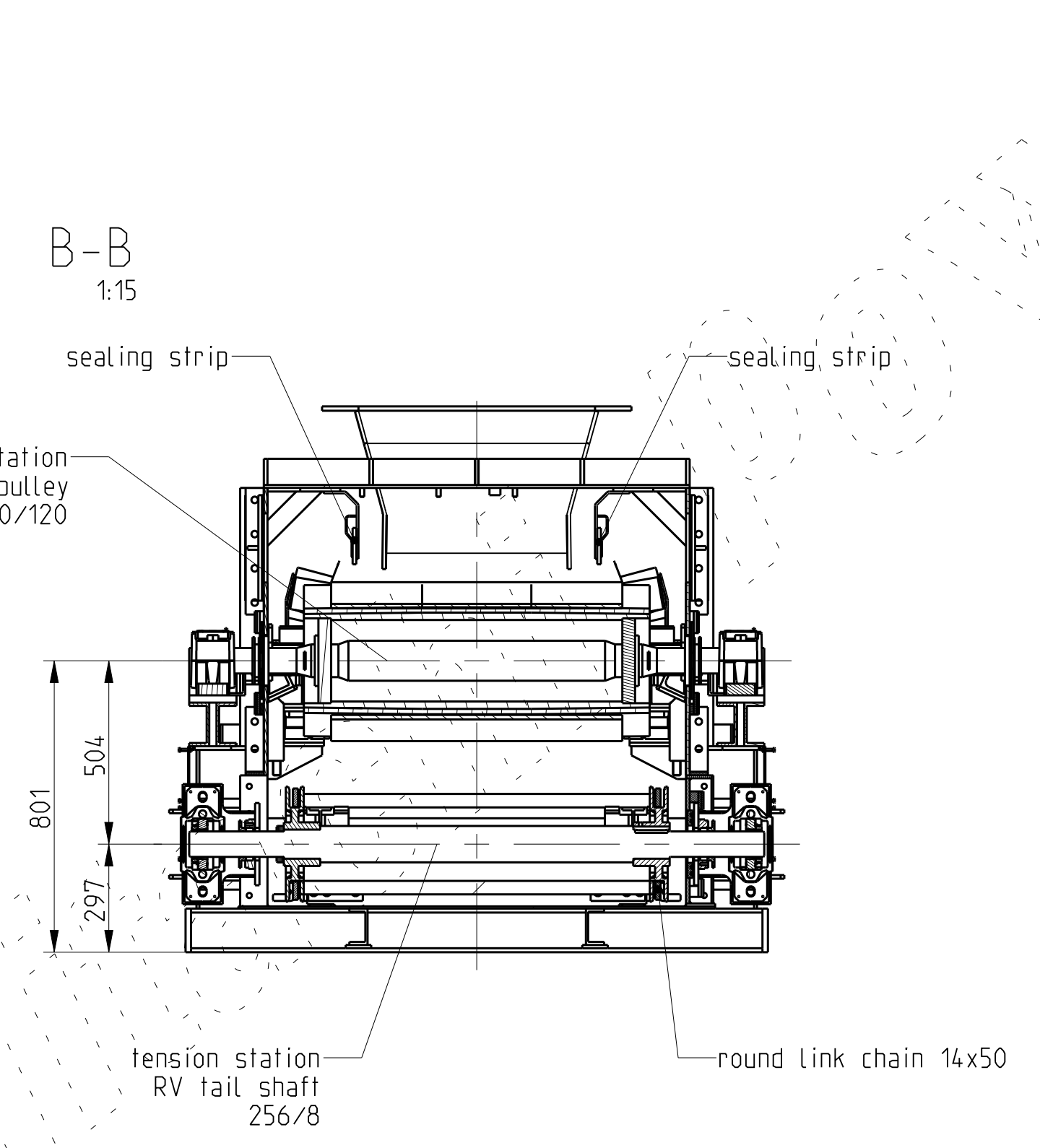
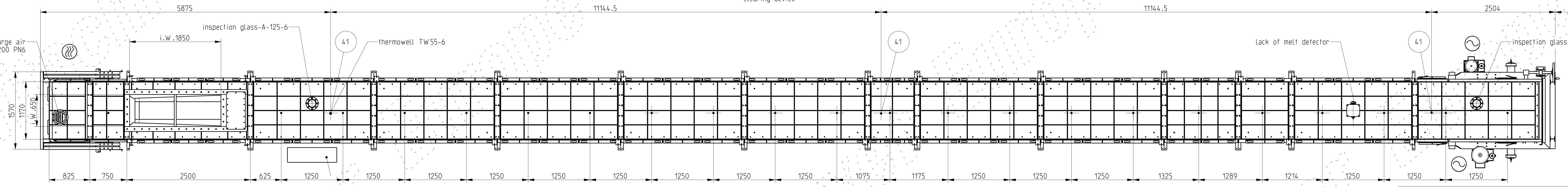
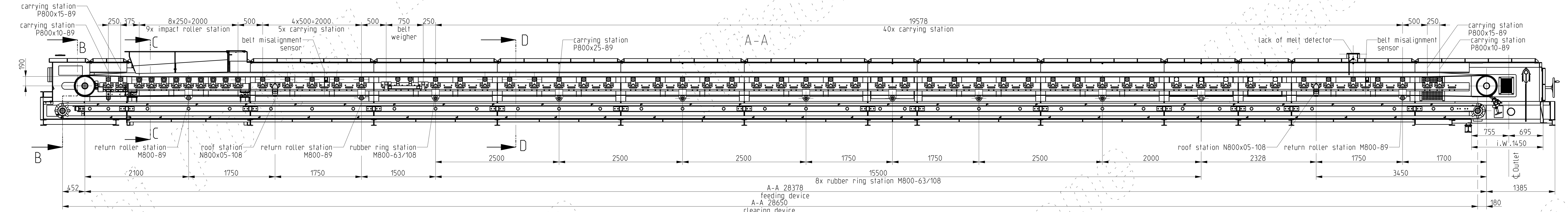
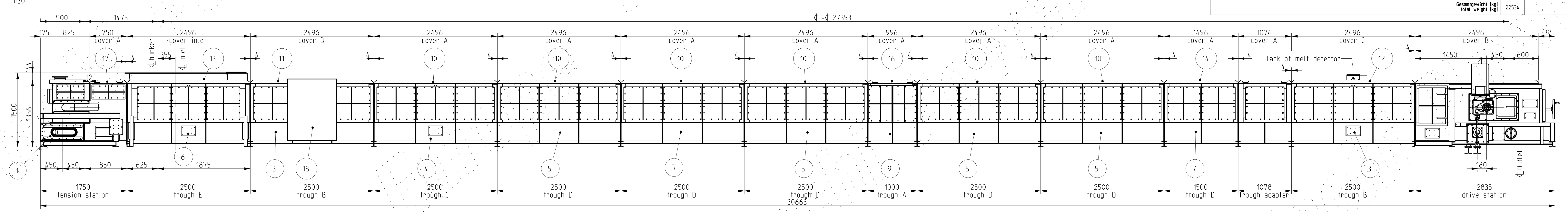
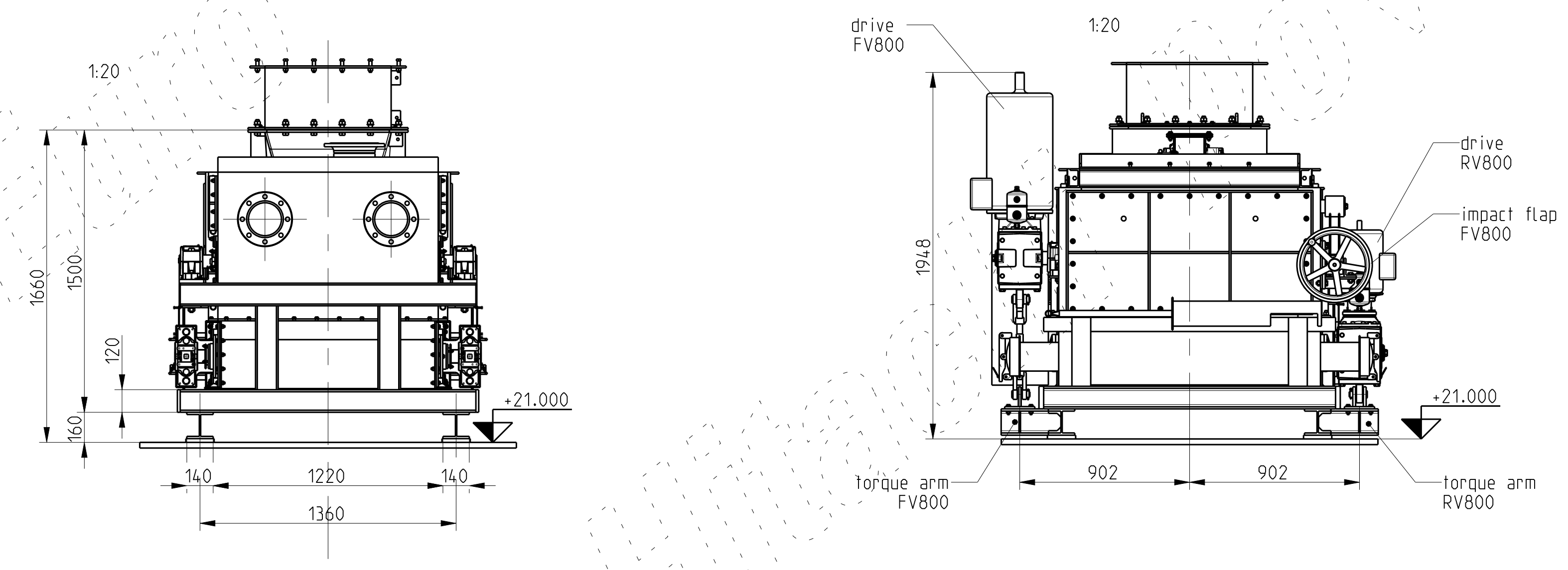


POS. item	LZ (mm)	STUECK quantity	BENENNUNG	description	kg/Stock	GEW (kg)	Zeichnungs-Nr. drawing-no.	BEMERKUNGEN
1	F	1	P800x2500 ATEX Spannstation	P800x2500 ATEX tension station	1919	1919	Z000002-M-005-1004-2100	
2	F	1	P800x2500 ATEX Antriebsstation	P800x2500 ATEX drive station	2157	2157	Z000002-M-005-1004-2000	
3	F	2	P800x2500 ATEX Trog B	P800x2500 ATEX trough B	1237	2473	Z000002-M-005-1004-2100	
4	F	1	P800x2500 ATEX Trog C	P800x2500 ATEX trough C	1215	1215	Z000002-M-005-1004-2202	
5	F	5	P800x2500 ATEX Trog D	P800x2500 ATEX trough D	1186	5931	Z000002-M-005-1004-2203	
6	F	1	P800x2500 ATEX Trog E	P800x2500 ATEX trough E	1320	1320	Z000002-M-005-1004-2204	
7	F	1	P800x1500 ATEX Trog D	P800x1500 ATEX trough D	747	747	Z000002-M-005-1004-2213	
8	F	1	P800x1078 ATEX Adapterstation	P800x1078 ATEX adapter station	538	538	Z000002-M-005-1004-2612	
9	F	1	P800x1000 ATEX Trog A	P800x1000 ATEX trough A	543	543	Z000002-M-005-1004-2220	
10	L	6	P800x2500 Deckel A	P800x2500 cover A	297	1779	Z000002-M-005-1004-2800	
11	L	2	P800x2500 Deckel B	P800x2500 cover B	312	625	Z000002-M-005-1004-2801	
12	L	1	P800x2500 Deckel C	P800x2500 cover C	316	316	Z000002-M-005-1004-2802	
13	L	1	P800x2500 Deckel D	P800x2500 cover D	504	504	Z000002-M-005-1004-2803	
14	L	1	P800x1500 Deckel A	P800x1500 cover A	189	189	Z000002-M-005-1004-2810	
15	L	1	P800x1078 Deckel A	P800x1078 cover A	133	133	Z000002-M-005-1004-2615	
16	L	1	P800x1000 Deckel A	P800x1000 cover A	125	125	Z000002-M-005-1004-2815	
17	L	1	P800x750 Deckel A	P800x750 cover A	100	100	Z000002-M-005-1004-2820	
18	L	1	Schalttschrank	local panel	101	101	supplier part	
20	1	Antrieb FV800	drive FV800	204	204	supplier part		
21	1	Drehmomentsfuge FV800	torque arm FV800	19	19	Z000002-M-005-1004-0900		
22	1	Gurt EP400/3 B=800 L=58 m	Belt EP400/3 B=800 L=58 m	483	483	supplier part		
23	2	Dichtleiste L=28 m	sealing strip L=28 m	34	67	supplier part		
30	1	Antrieb RV800	drive RV800	170	170	supplier part		
31	1	Drehmomentsfuge RV800	torque arm RV800	13	13	Z000002-M-005-1004-1900		
32	2	Rundstahlkette 14x50 L=58 m	round link chain 14x50 L=58 m	233	465	Z000002-M-005-1004-1960		
33	59	Mitnehmer RV-800	scraper RV-800	7	396	Z000002-M-005-1004-1960		
41	L	3	Schutzrohr TW55-6	thermowell TW55-6	0	0	supplier part	
Gesamtgewicht (kg) total weight (kg)					22534			



AA	23.04.2018	drawing revised	Tolyman	Moel	Blask
00	01.08.2017	final issue	Knapen	Plady	Blask
REV. NO.	DATE	DESCRIPTION	DESIGNED	CHECKED	APPROV
PROJECTOWNER					
PTOLEMAIS UNIT V 660 MW POWER PLANT CONTRACT DMKT - 11 09 5052 PUBLIC POWER CORPORATION S.A.					
CONTRACTOR			 TERNA S.A. 85 MESOGEION AVE., 115 26 ATHENS, GREECE Tel.: +30 210 69 68 000, Fax: +30 210 69 68 099 e-mail: terna@terna.gr		
SUBCONTRACTOR			SUBCONTRACTOR DWG. NO. HITACHI Inspire the Next N-100170-M-005-ID04-00004-AA		
TITLE					
Belt Conveyor - HFB40/50 P800 ATEX - 27.353 m Overview					
sym.	description		SCALE	DRAWING NO.	SHEET
⊖	690V AC, 50Hz		1:30	4311-M-005-ID04-00004	01 of 01
⊕	purge air				AA
THIS DRAWING SHALL NEITHER BE DUPLICATED, TRANSFERRED NOR REVISED, WITHOUT OUR PRIOR WRITTEN APPROVAL. IT SHALL NOT BE MADE AVAILABLE TO THIRD PARTIES ANY AND ALL RIGHTS IN ACCORDANCE WITH THE GERMAN LAW ON COPYRIGHT (URHG) AND GERMAN ACT AGAINST UNFAIR PRACTICES (UWG) SHALL REMAIN UNAFFECTED.					

